

Presentation of the competition:

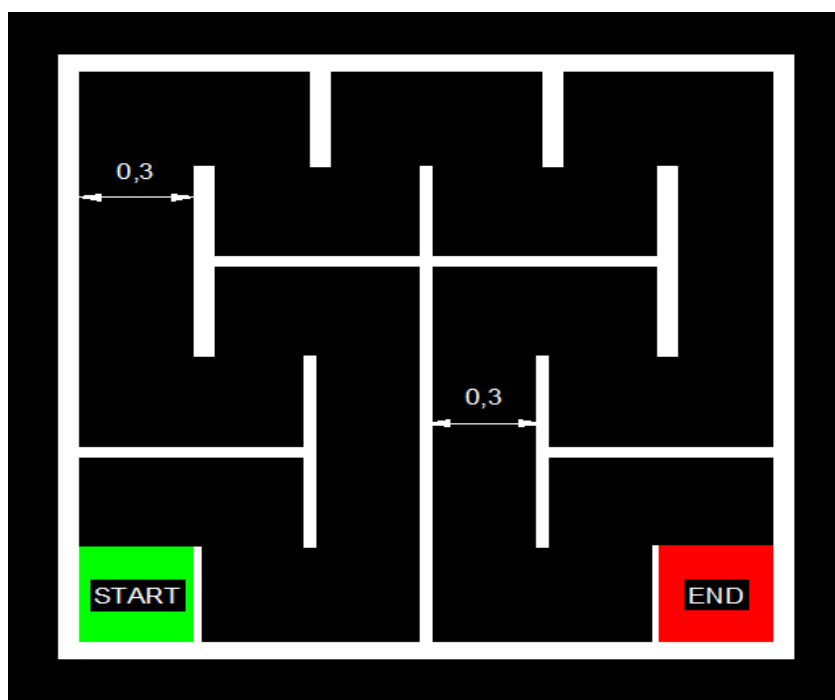
The MAZE competition is a game whose participants are brought to bring (prefabricated) robots or build autonomous robots capable of crossing the arena of the game before the time runs out. The robot with the highest score is declared the winner

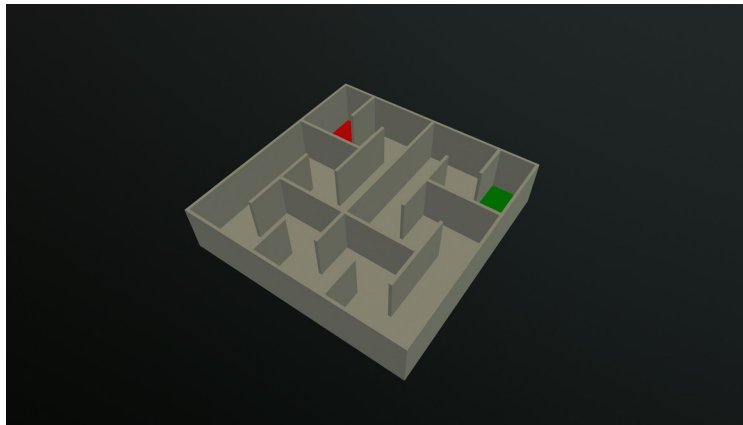
Robot specification:

- The robot can be entirely or partially built by the participants.
- The NXT robot is authorized.
- The VEX robot is authorized.
- The mBot robot is authorized.
- The robot must be autonomous. No file will be connected to the robot during the game.
- The dimensions of the robot are:
 - Height: 25cm
 - Width: 25 cm
 - Length: 25cm
- A tolerance of 10% can be accepted.

Principle and game details:

Before the referee's signal, only one robot is placed on the starting line. Once the signal is given, the team leader presses the start button and the robot begins to run around the track. The hard part 3min.





Evaluation :

The robot with the highest final score is declared the winner, in case of a tie the robots with the highest final score compete again.

- Score achieved: In each crossed position 10 points are awarded to the robot.
- Technical score:
 - Electronic cards designed and produced by the team. (10pt)
- Final score = score achieved + technical score + (180 - time elapsed in seconds).

Rules:

- Before the entry into play, each robot must be approved.
- With each perfect and total passage of one of the stations (zones of challenges) of the arena of play, the robot gains points.
- Matches last 180 seconds.
- Each team will have one minute to set up their robot before starting to play.
- After switching on the robot, it will be forbidden to touch the robot again or approach the game model
- Any change in the robot after the approval test automatically leads to its elimination.
- At the end of the match, participants are strictly prohibited from touching either the robots or the playing elements except the referee.
- Jury alone is entitled to count points.